

10 - Carta geologica della zona delle sorgenti di Santa Fiora e morfologia del substrato argilloso-marnoso impermeabile alla base dell'acquifero ignimbritico (da Penta, 1954; semplificato).

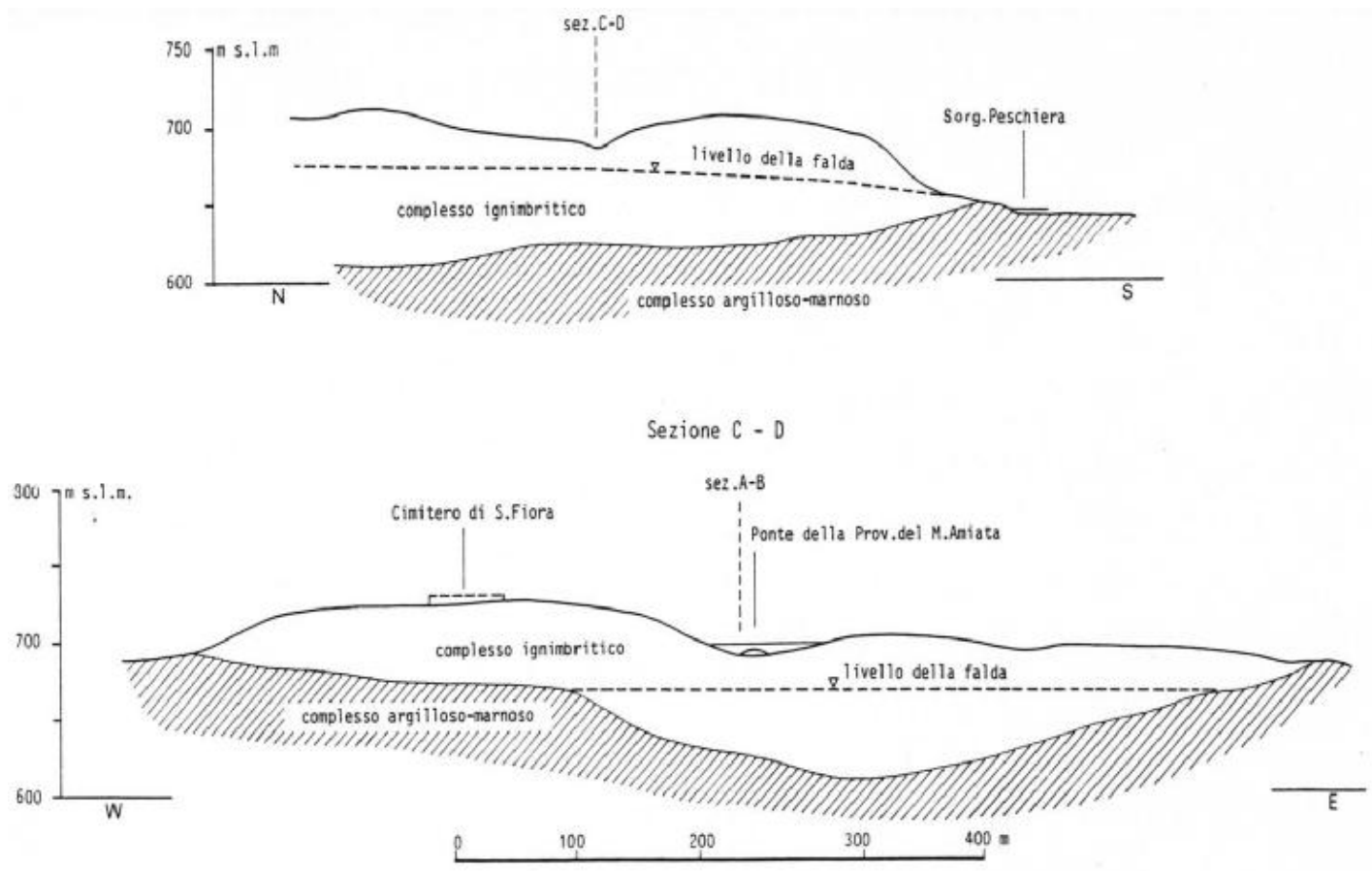
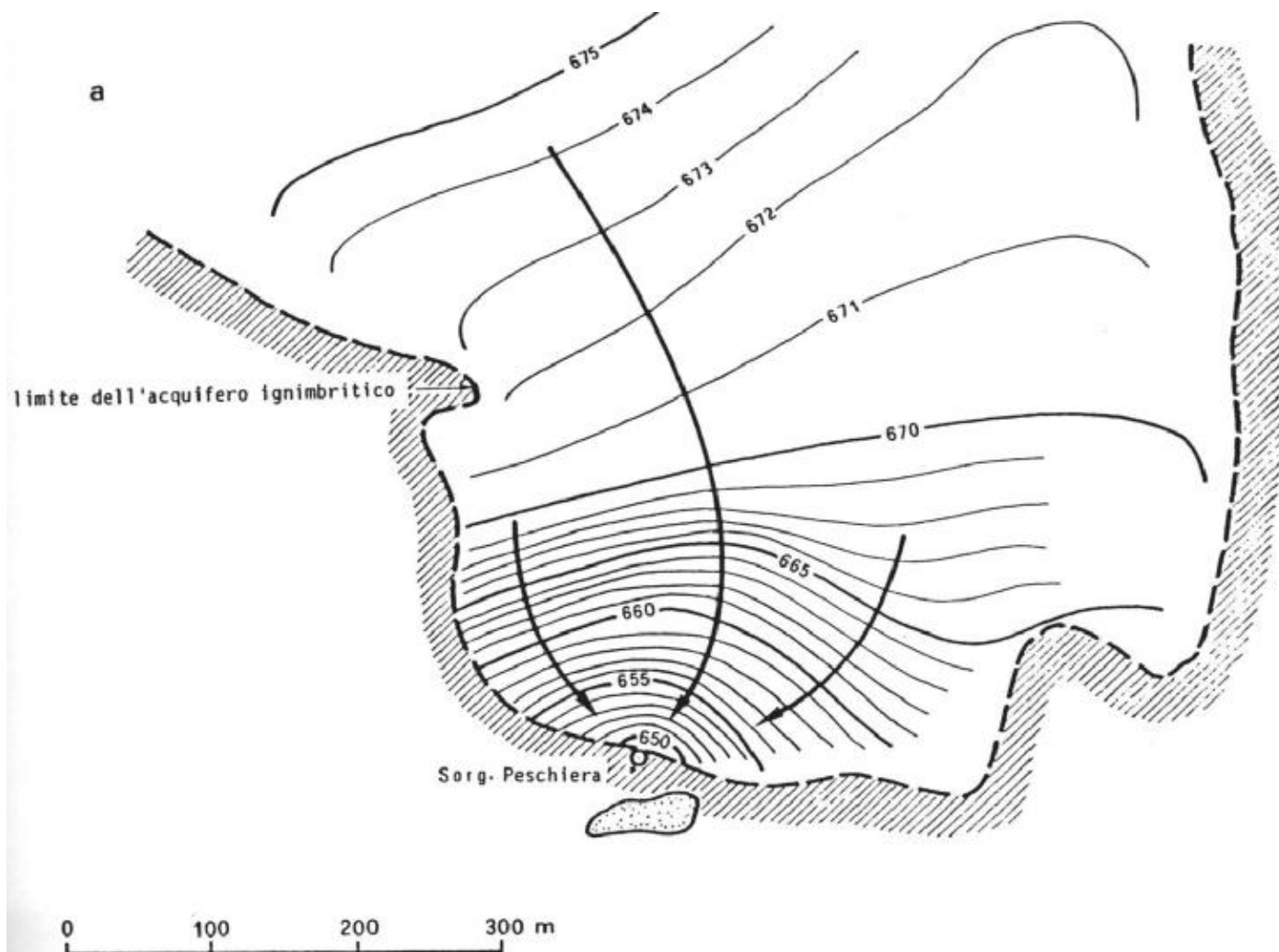
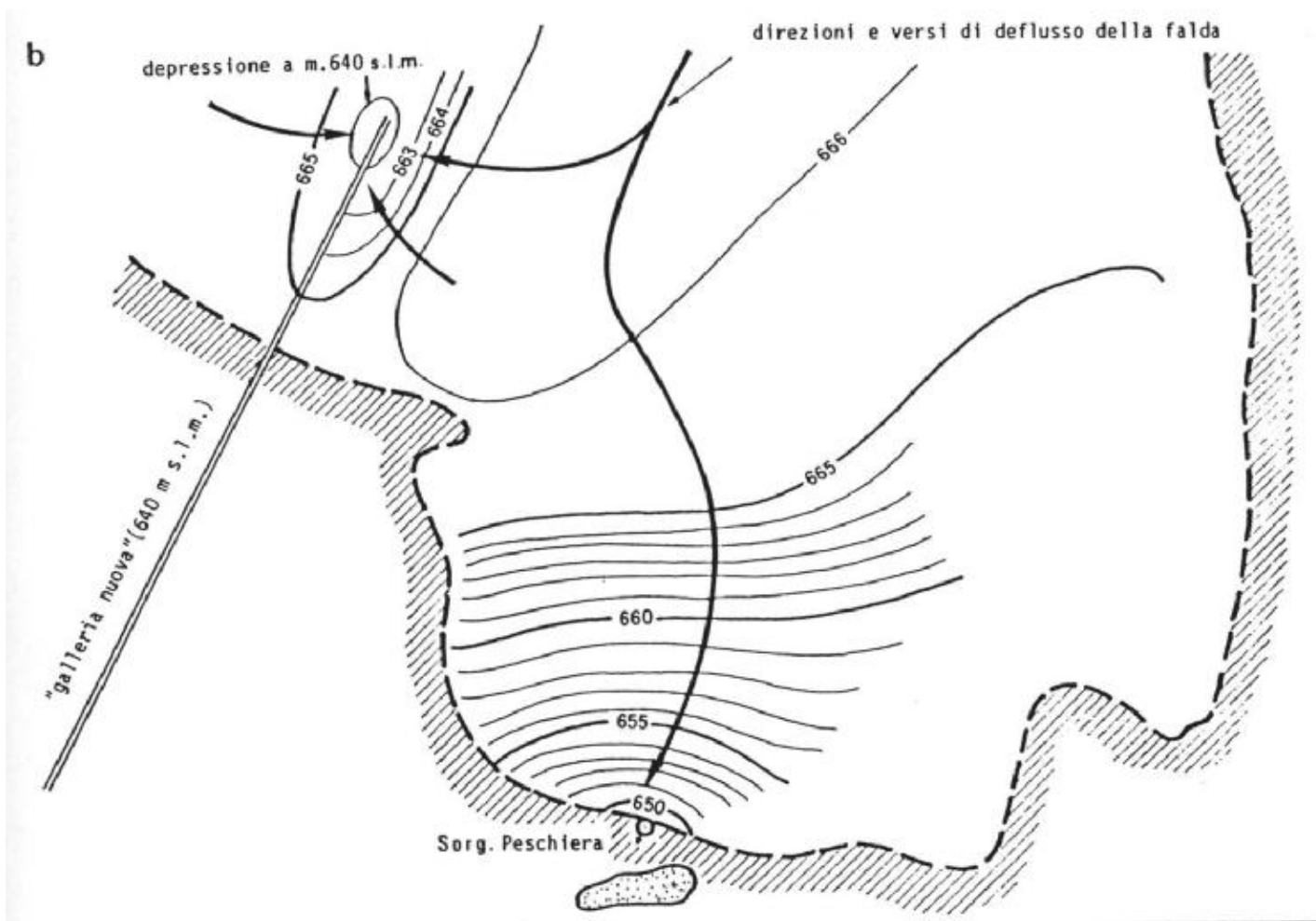


Fig. 11 - Sezioni geologiche (cfr. fig. 10) della zona delle sorgenti di Santa Fiora (da Penta, 1954; semplificato).





13 - Carta delle isopiezometriche della zona delle sorgenti di Santa Fiora, riferite al 15/10/1959 (a) ed al 15/6/1954 (b); (da Trevisan, 1964; semplificato)

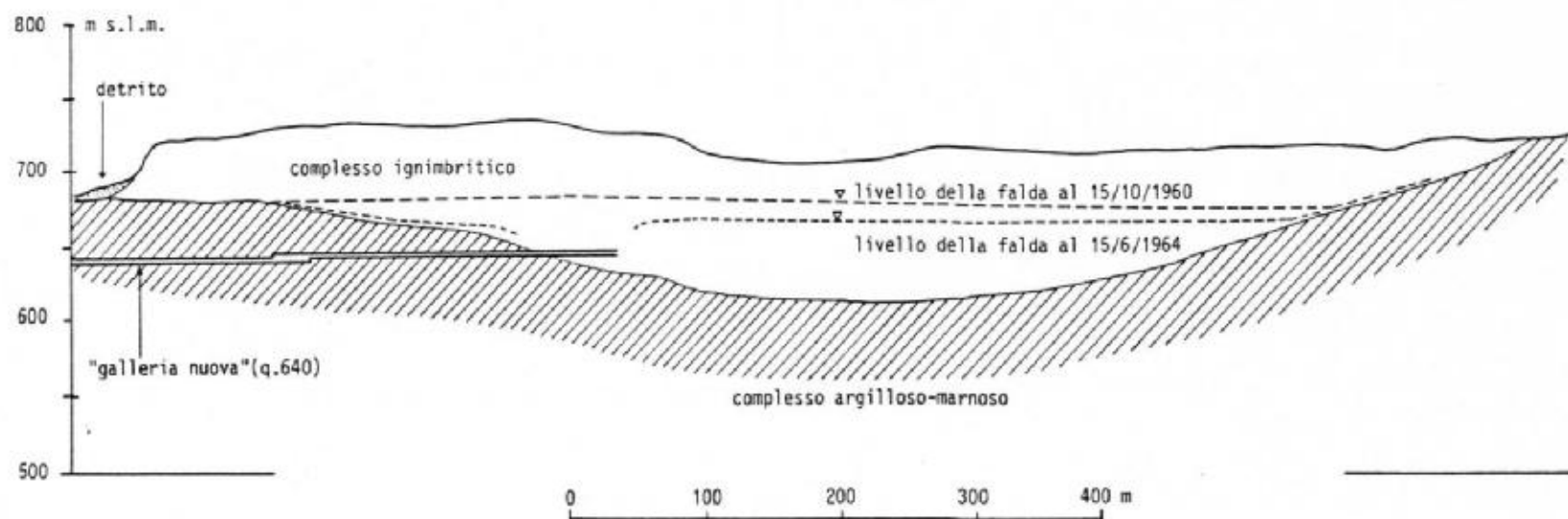


Fig. 14 - Sezione idrogeologica lungo l'asse della "galleria nuova" (da Trevisan, 1964; semplificato).

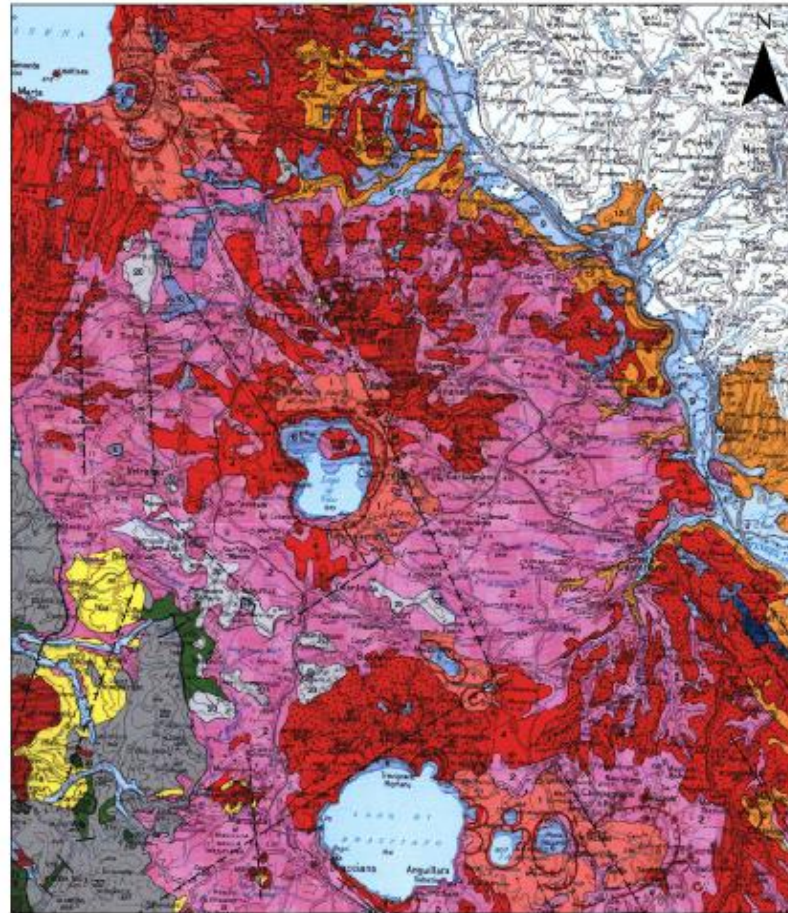


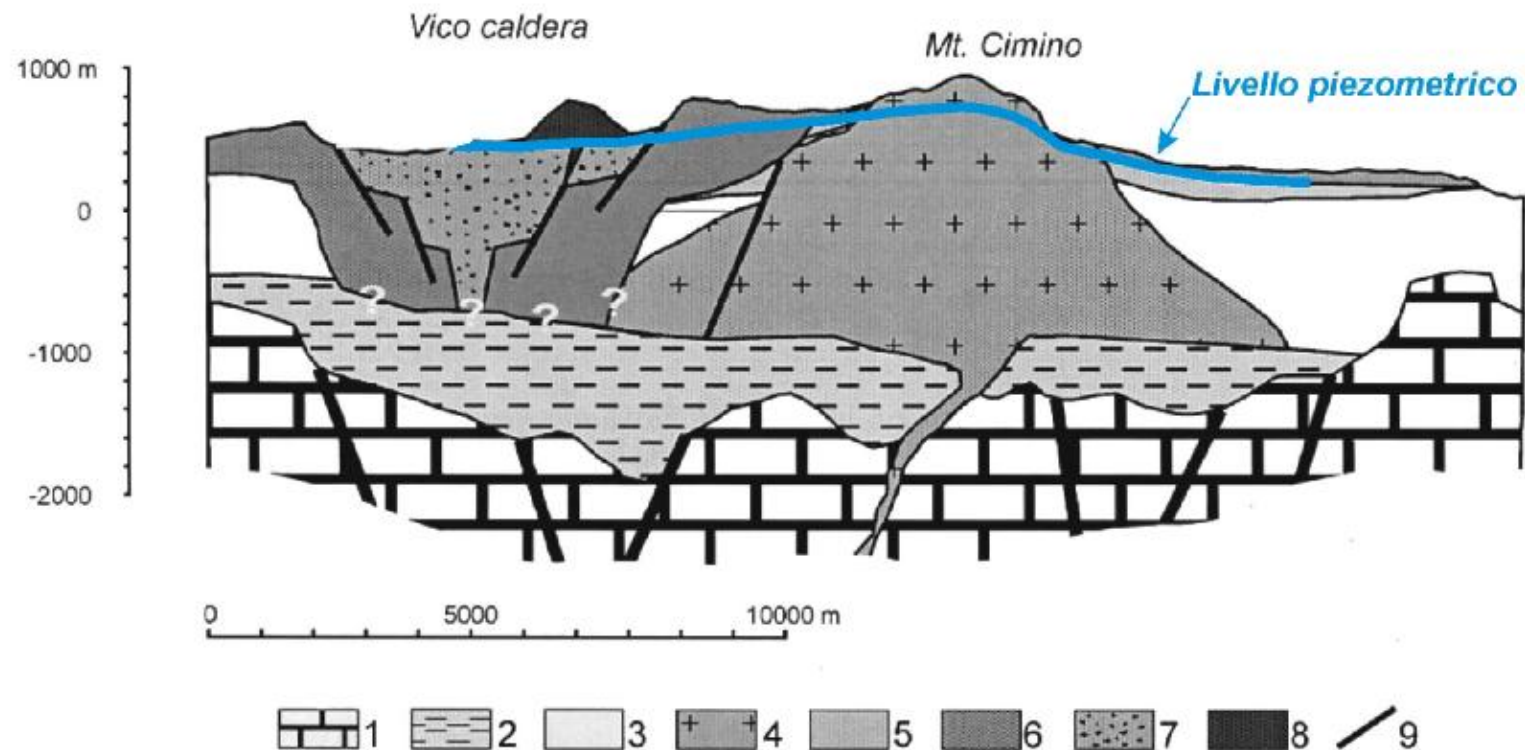




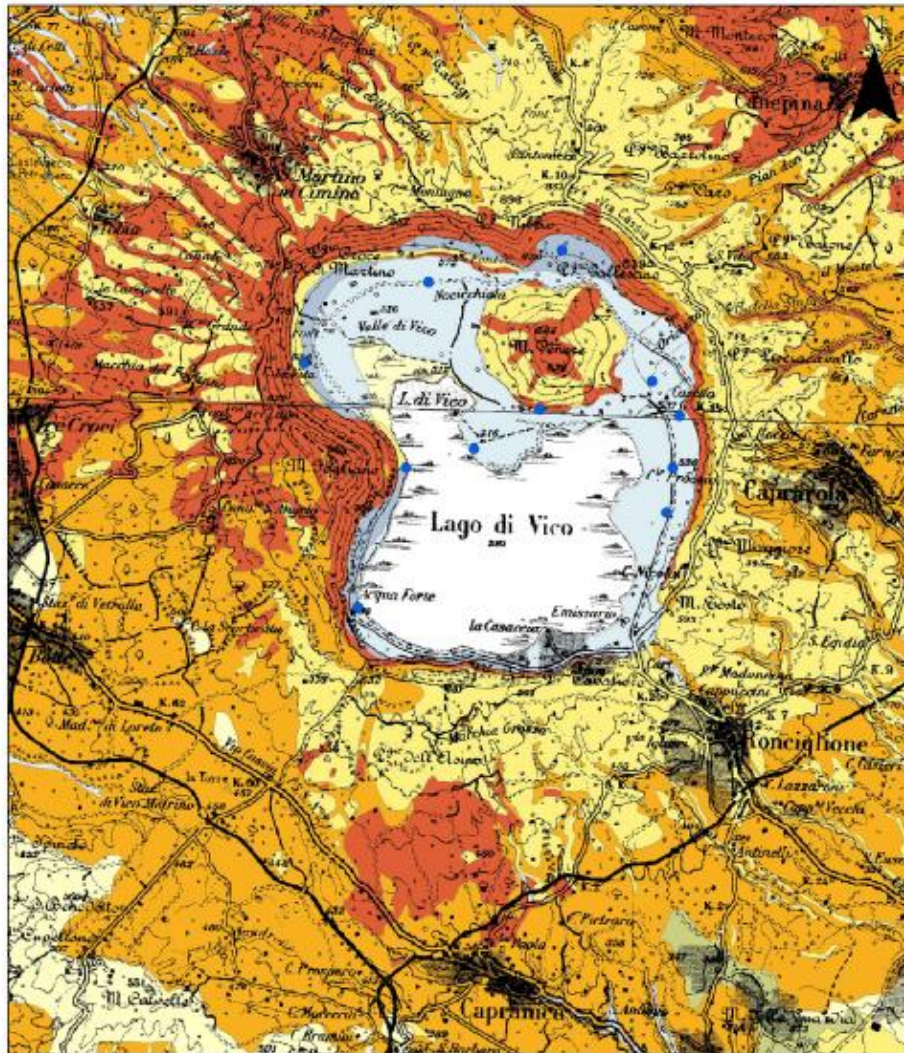





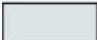









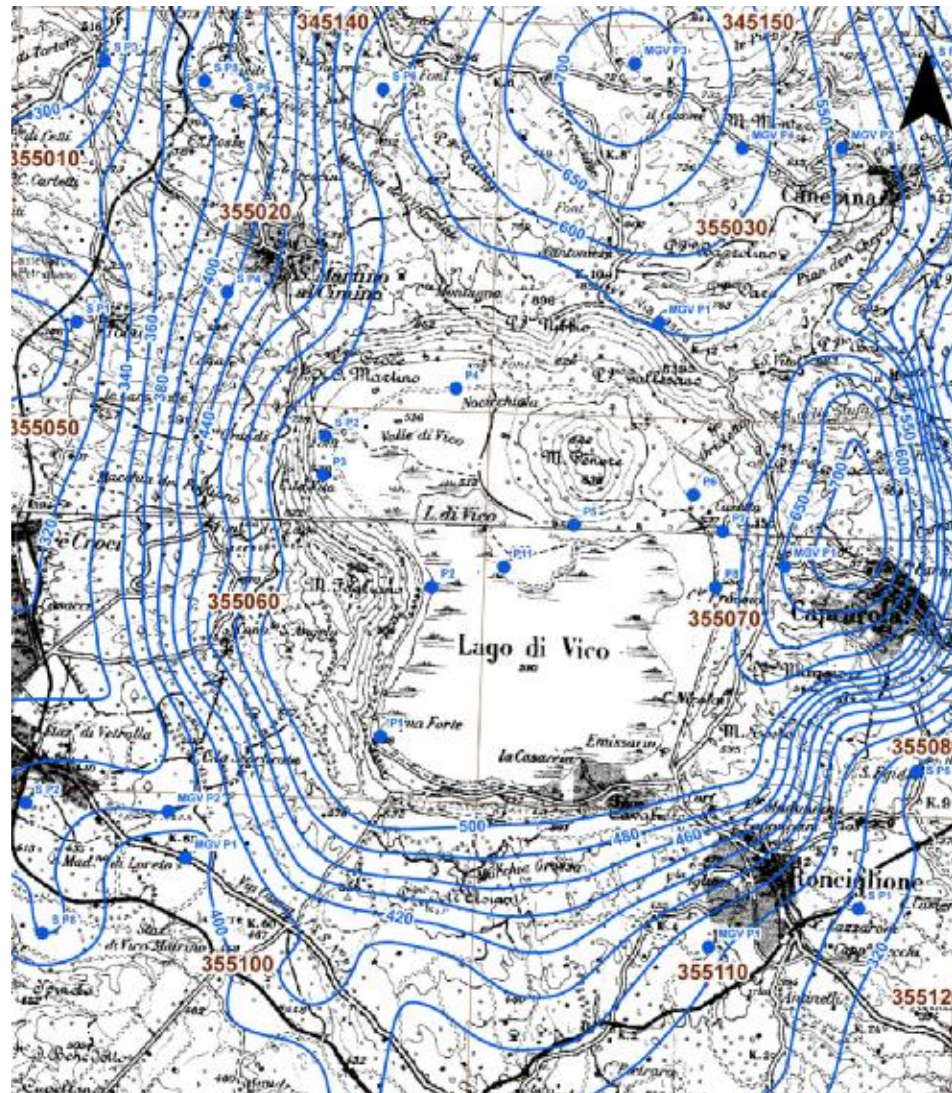
Sezione geologica schematica dei Monti Cimino. **Legenda:** 1) Calcari mesozoici; 2) Sedimenti silicoclastici cenozoici; 3) Sedimenti marini plio-pleistocenici; 4) CDC lave trachidacitiche; 5) CDC ignimbriti; 6) Depositi alcalino-potassici della Caldera di Vico; 7) Depositi vulcanici di riempimento della Caldera di Vico; 8) Cono di scorie del Monte Venere; 9) Faglie e fratture. (da Cimarelli & de Rita, 2006).

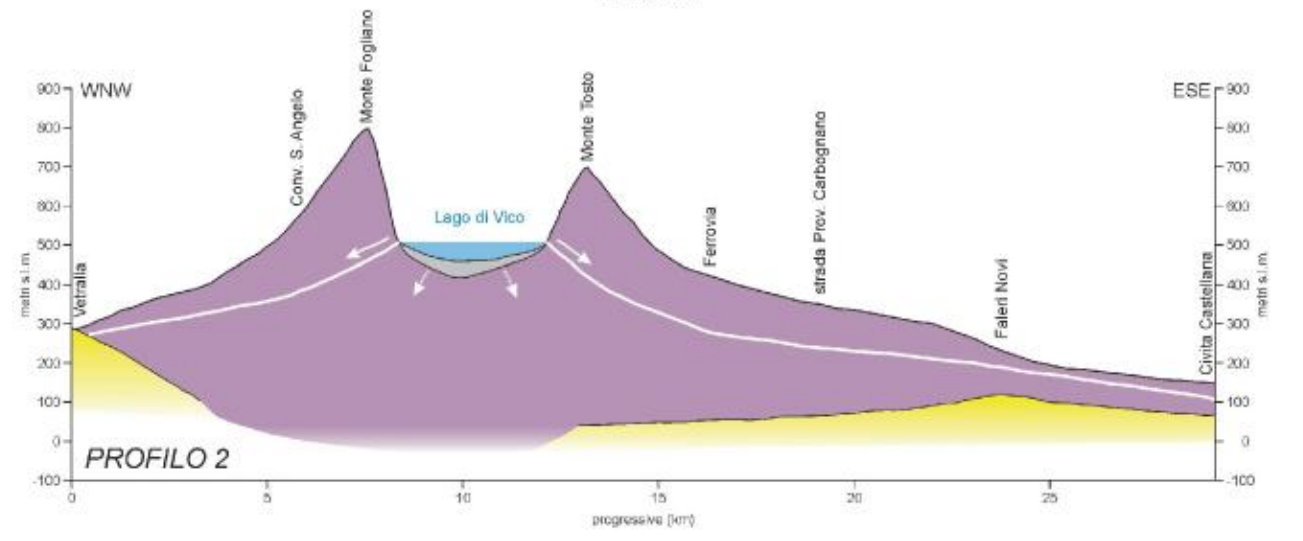
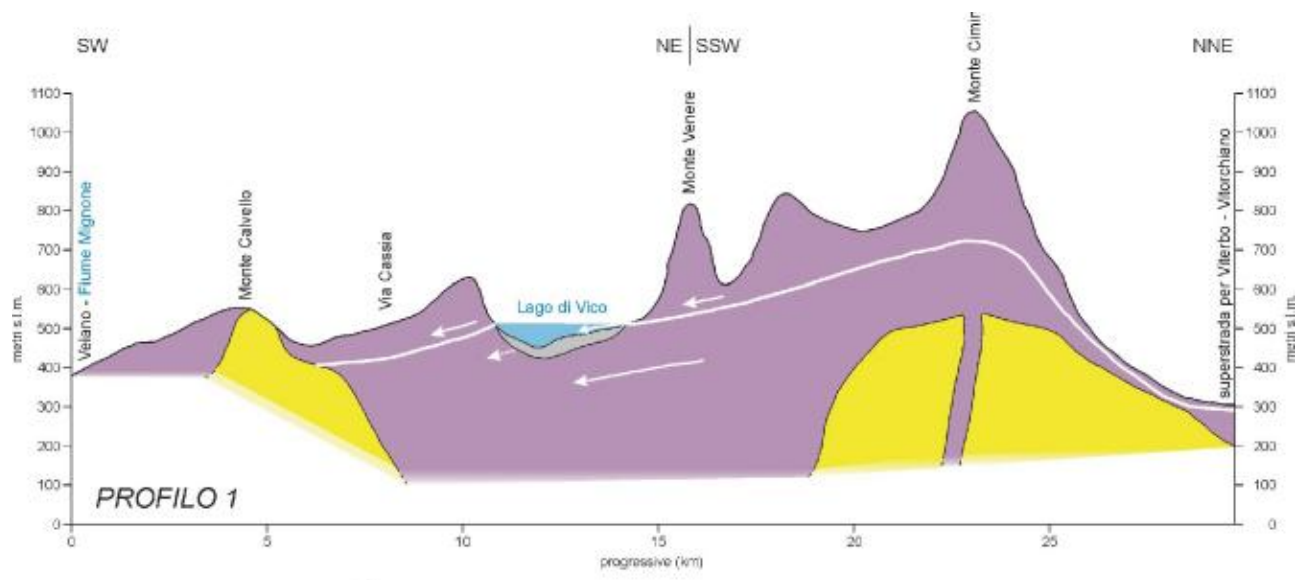


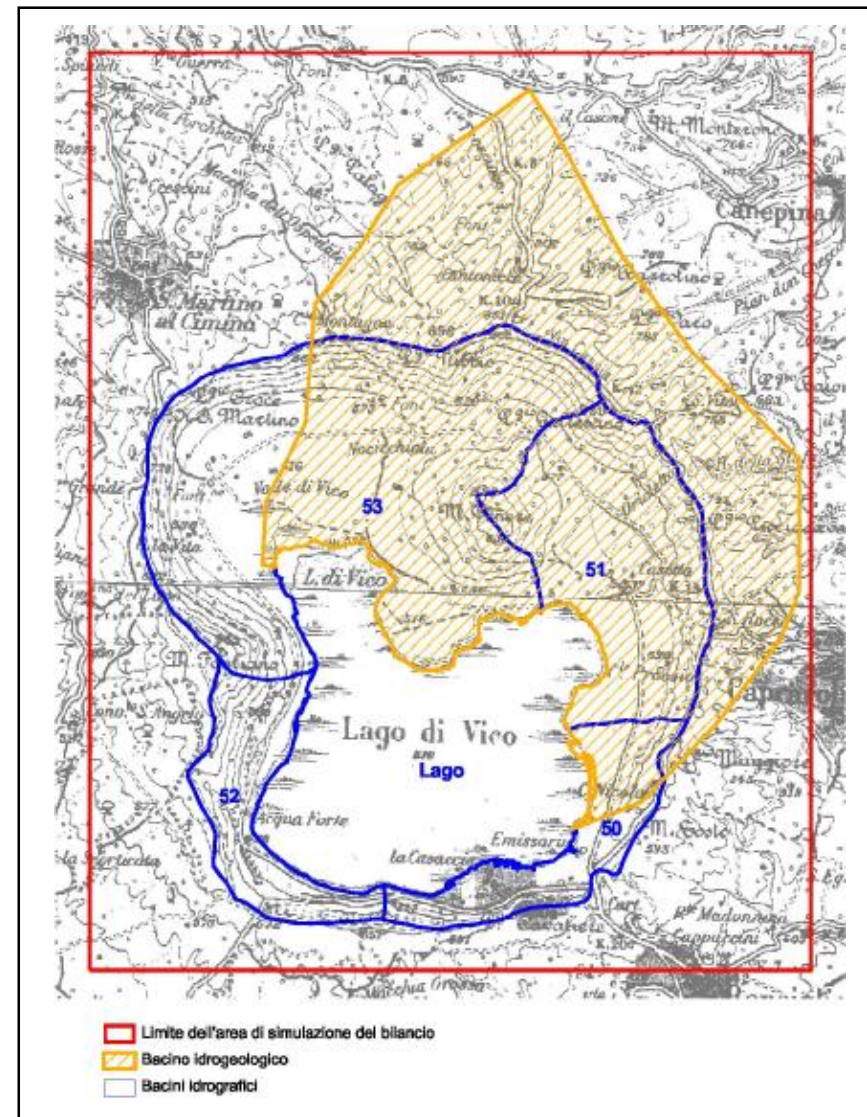
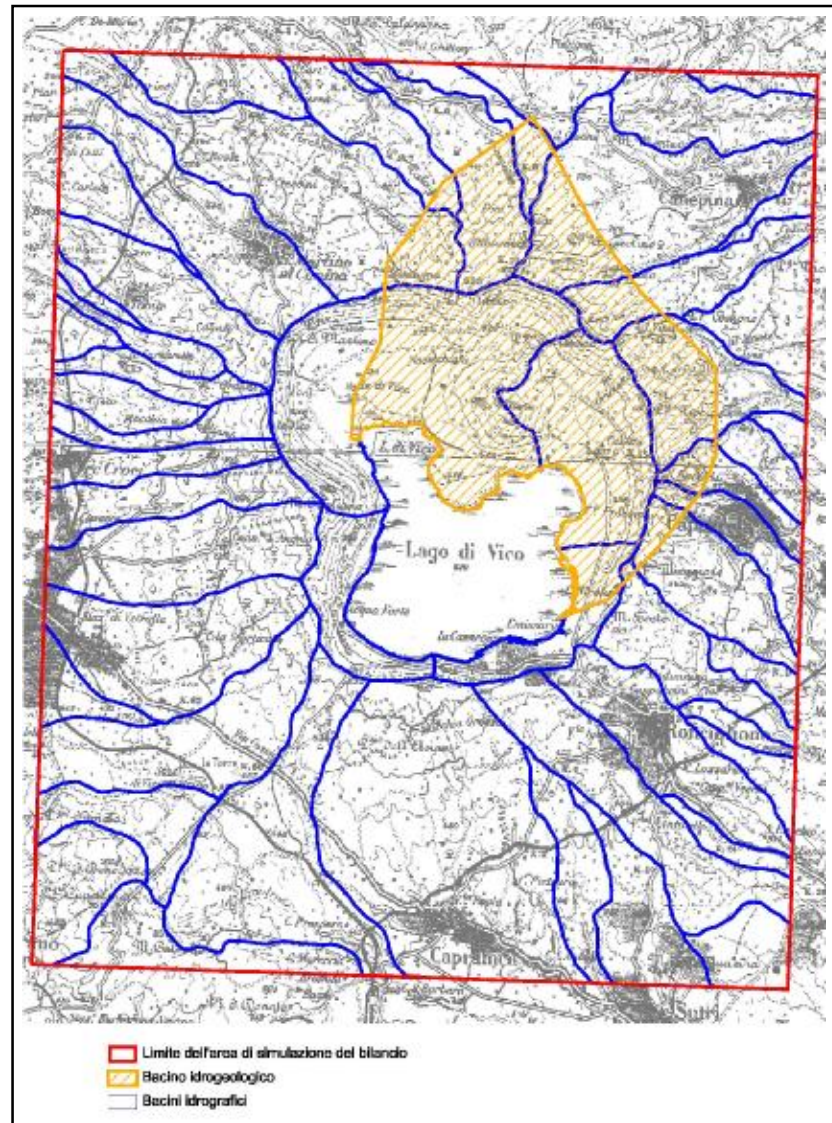
LEGENDA

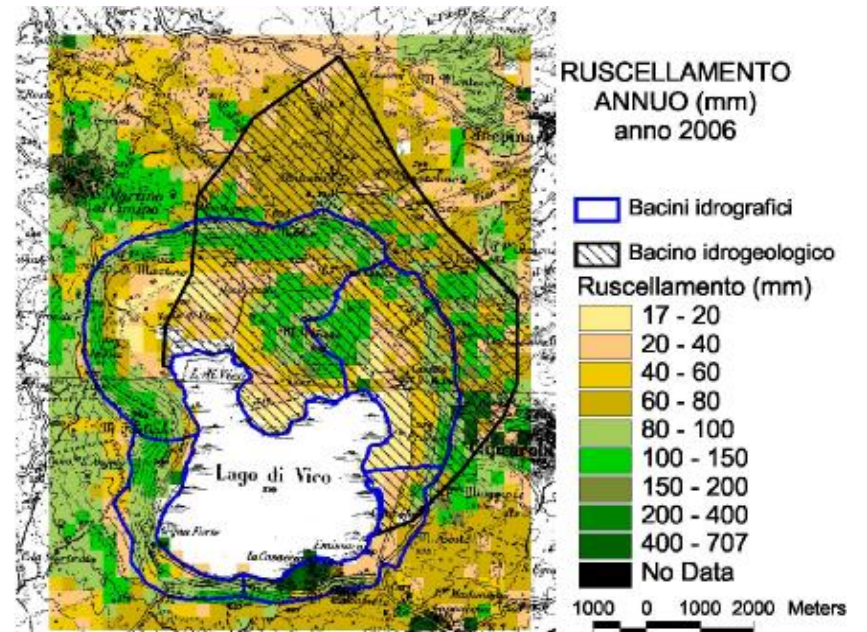
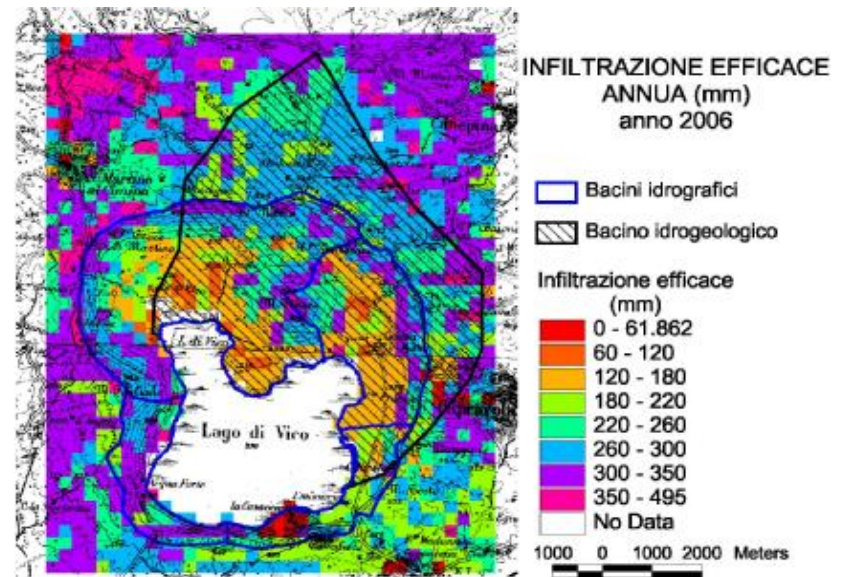
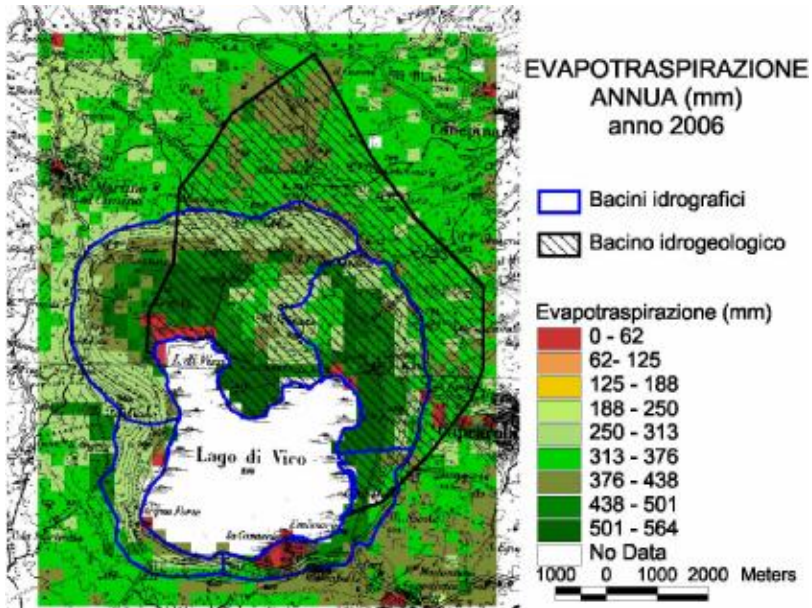
-  *Complesso dei conoidi e dei detriti di versante.*
-  *Complesso delle alluvioni.*
-  *Complesso dei tufi stratificati e delle facies freatomagmatiche.*
-  *Complesso delle lave, dei laccoliti e dei coni di scorie.*
-  *Complesso delle pozzolane.*
-  *Complesso dei depositi terrigeni.*
-  *Complesso dei calcari detritici.*

0 1 2 3 4 km









Bilancio idrologico
 $EV+R+Ie=P$